

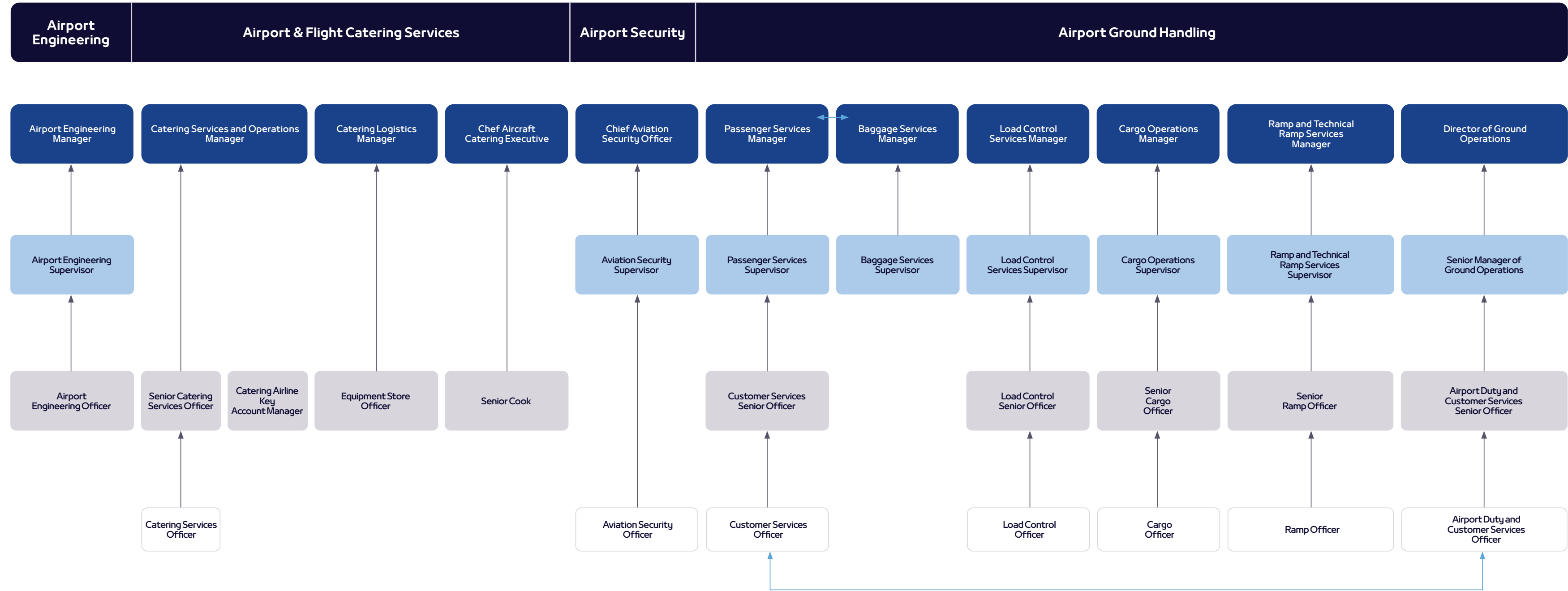
TRANSPORT AND LOGISTICS CAREER PATHWAY MAP

Content Disclaimer

This document was prepared in the first quarter of 2024 by Skills Bahrain, an initiative under the Labour Fund (Tamkeen). This document is intended for general informational purposes only. The information presented has been prepared using sources believed by Skills Bahrain to be reliable and accurate. Skills Bahrain makes no representation or warranty of any kind, expressed or implied, regarding the accuracy, adequacy, validity, reliability, availability or completeness of any information or data in this document. The contents of this document shall remain at all times the property of Skills Bahrain.

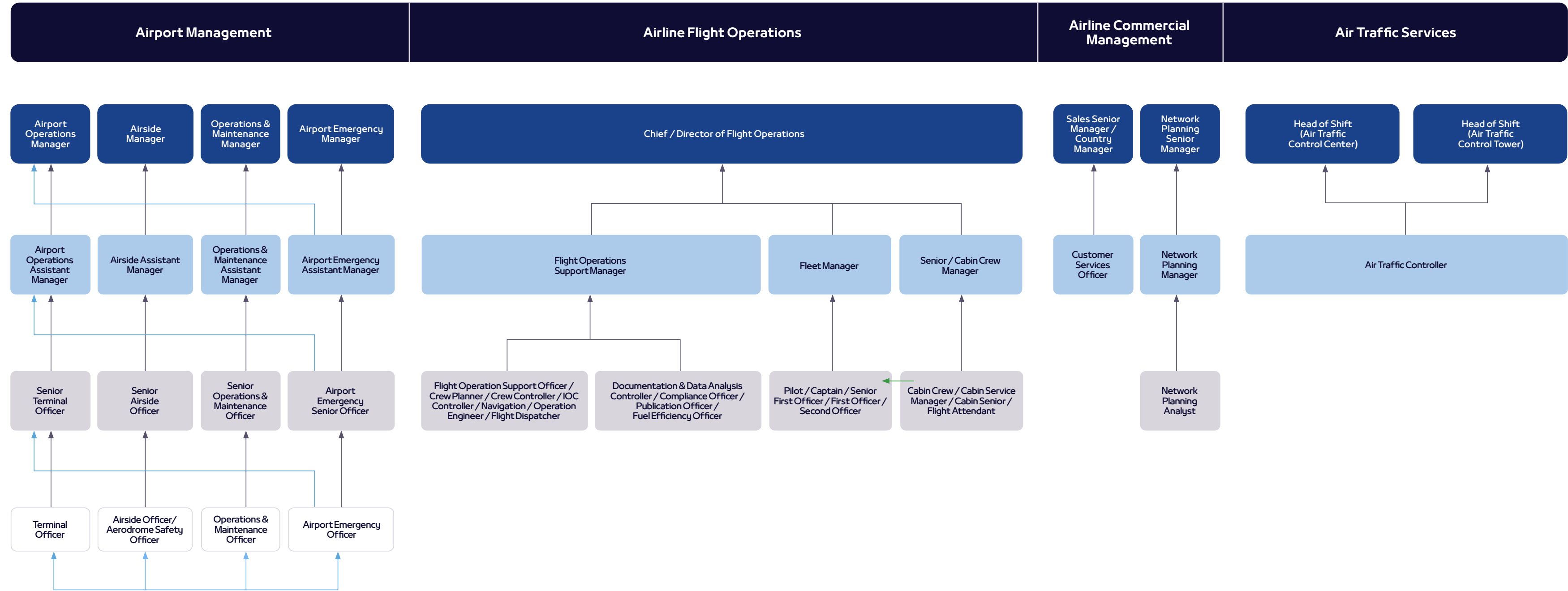
Tamkeen, including its officers, board members, employees and agents, together with any contributors to this report are not liable for any inaccuracy, error or omission in the contents of this document nor for any loss, damage, cost or expense whether direct, indirect, consequential or special, incurred by, or arising by reason of any person using or relying on the contents and whether caused by reason of any inaccuracy, error, omission or misrepresentation in the contents or otherwise.

Transport and Logistics Career Pathway Map



*The Career Map serves as a reference to reflect the available job roles and possible career pathways in the sector, which may vary depending on each organisation's structure and business context. The career progression pathways would depend on individual performance, capability, experience, aspiration, as well as organisation needs.
 Note: All engineering professions must acquire a mandatory license from the Council for Regulating the Practice of Engineering Professions (CRPEP) to operate in the Kingdom of Bahrain.

Transport and Logistics Career Pathway Map



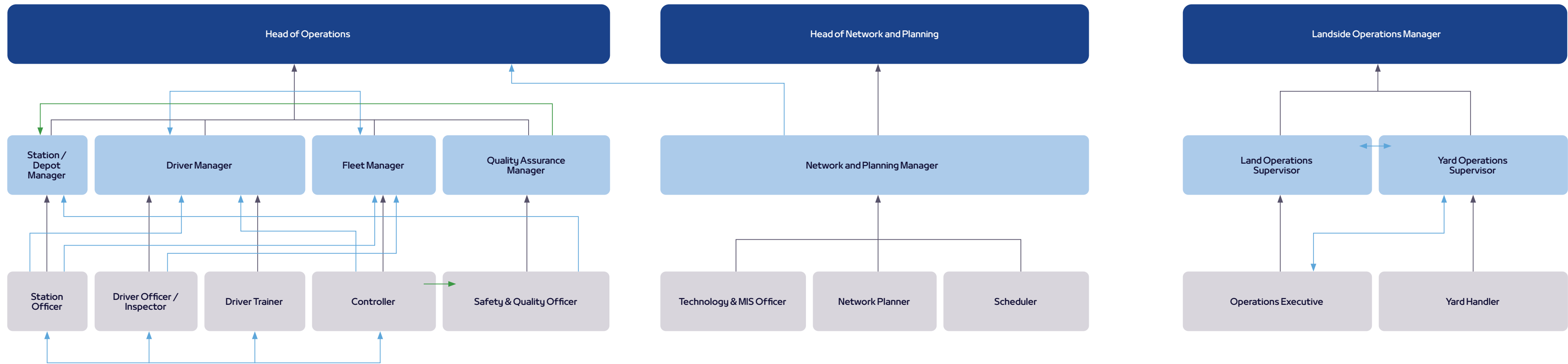
*The Career Map serves as a reference to reflect the available job roles and possible career pathways in the sector, which may vary depending on each organisation's structure and business context. The career progression pathways would depend on individual performance, capability, experience, aspiration, as well as organisation needs.
 Note: All engineering professions must acquire a mandatory license from the Council for Regulating the Practice of Engineering Professions (CRPEP) to operate in the Kingdom of Bahrain.

Transport and Logistics Career Pathway Map



Bus Operations

Land Road Operations

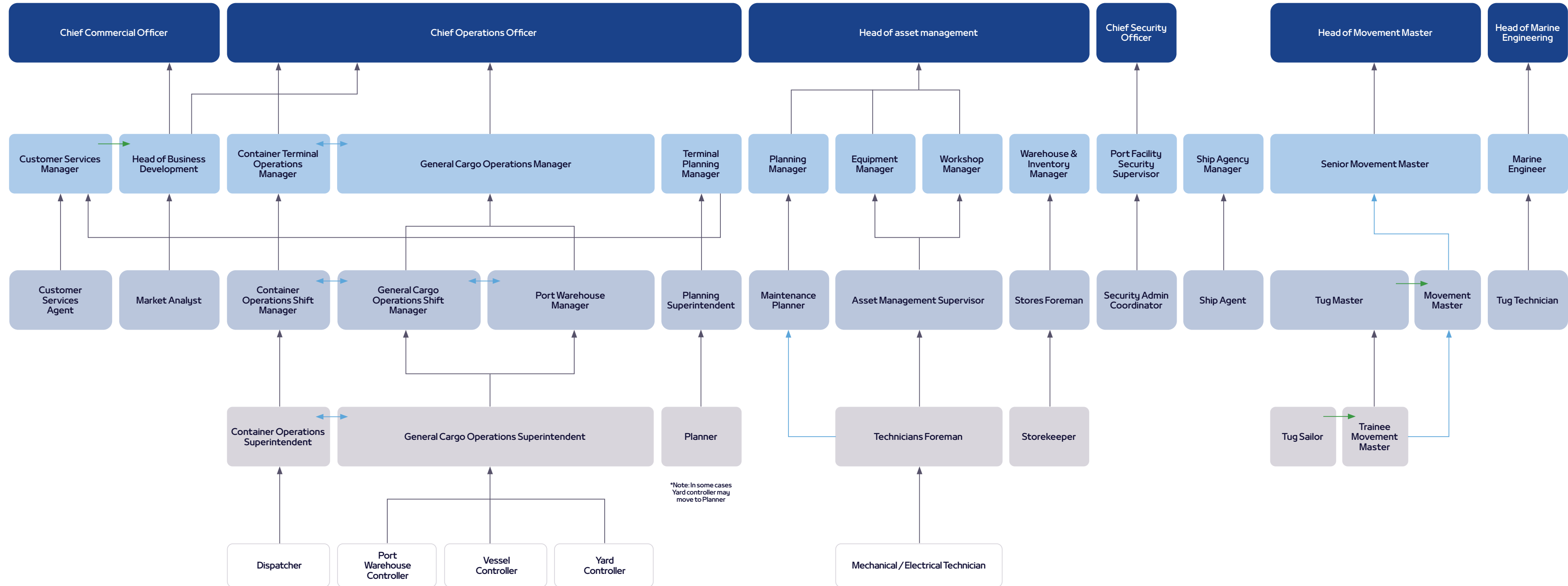


*The Career Map serves as a reference to reflect the available job roles and possible career pathways in the sector, which may vary depending on each organisation's structure and business context. The career progression pathways would depend on individual performance, capability, experience, aspiration, as well as organisation needs.
 Note: All engineering professions must acquire a mandatory license from the Council for Regulating the Practice of Engineering Professions (CRPEP) to operate in the Kingdom of Bahrain.

Transport and Logistics Career Pathway Map

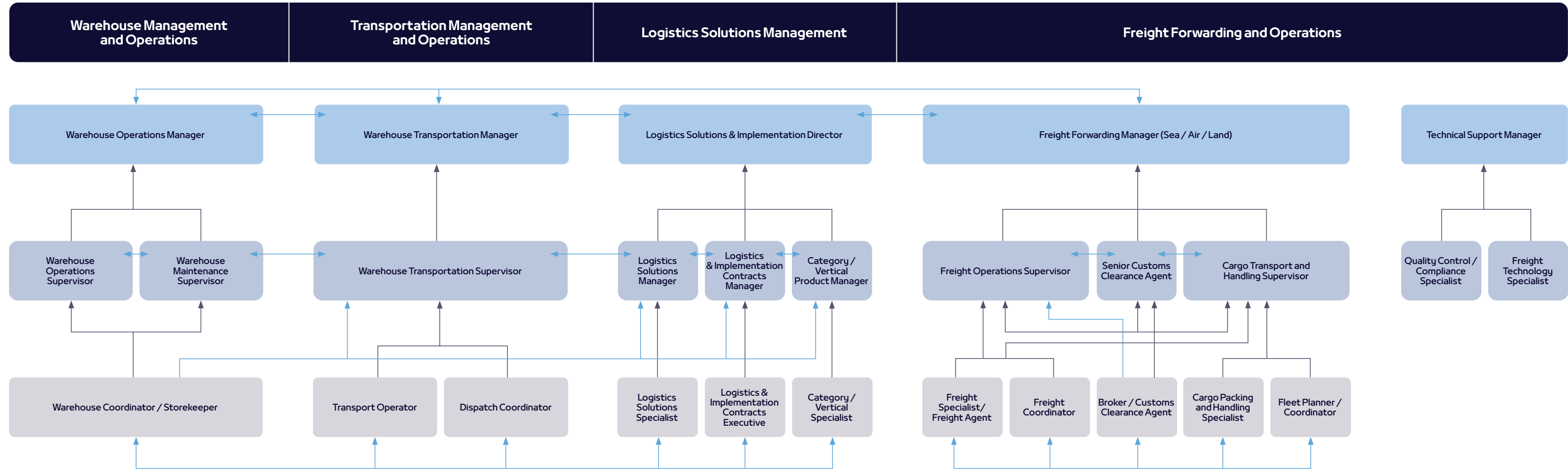


Port Operations Management Shipping Services Maritime Towage and Pilotage



*The Career Map serves as a reference to reflect the available job roles and possible career pathways in the sector, which may vary depending on each organisation's structure and business context. The career progression pathways would depend on individual performance, capability, experience, aspiration, as well as organisation needs.
 Note: All engineering professions must acquire a mandatory license from the Council for Regulating the Practice of Engineering Professions (CRPEP) to operate in the Kingdom of Bahrain.

Transport and Logistics Career Pathway Map



*The Career Map serves as a reference to reflect the available job roles and possible career pathways in the sector, which may vary depending on each organisation's structure and business context. The career progression pathways would depend on individual performance, capability, experience, aspiration, as well as organisation needs.
 Note: All engineering professions must acquire a mandatory license from the Council for Regulating the Practice of Engineering Professions (CRPEP) to operate in the Kingdom of Bahrain.